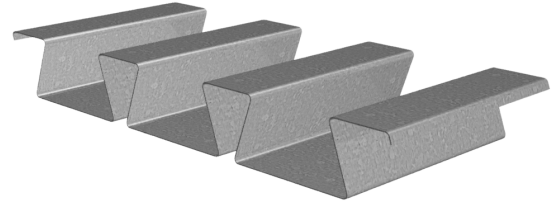


3.5DF-24 DOVETAIL ROOF DECK GRADE 50 STEEL

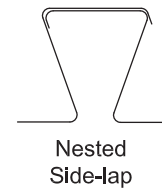
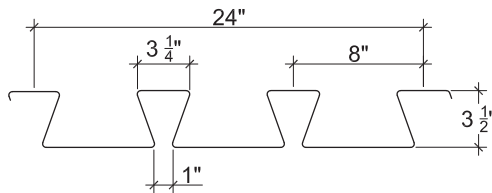
ASD

3.5DF-24 DOVETAIL ROOF DECK

- Enhanced 2-Coat Polyester Paint
- White Factory Primer Paint
- Galvanized Finish
- FM Listed



Nominal Dimensions



Section Properties

Deck Gage	Deck Weight w_{dd} (psf)	Base Metal Thickness t (in.)	Yield Strength F_y (ksi)	Effective Moment of Inertia at Service Load $I_d = (2I_e + I_g)/3$		Effective Section Modulus at $F_y = 50$ ksi		Allowable Moment		Vertical Web Shear
				I_{d+} (in ⁴ /ft)	I_{d-} (in ⁴ /ft)	S_{e+} (in ³ /ft)	S_{e-} (in ³ /ft)	M_{n+}/Ω (lb-ft/ft)	M_{n-}/Ω (lb-ft/ft)	V_n/Ω (lb/ft)
18	4.5	0.0478	50	2.688	2.496	1.055	0.935	2633	2333	6813
16	5.6	0.0598	50	3.430	3.256	1.417	1.289	3536	3217	9781

Allowable Reactions at Supports Based on Web Crippling, R_n/Ω (lb/ft)

Deck Gage	Bearing Length of Webs											
	One-Flange Loading					Two-Flange Loading						
	End Bearing		Interior Bearing			End Bearing		Interior Bearing				
	2"	3"	4"	5"	4"	6"	2"	3"	4"	5"	4"	6"
18	1465	1668	1840	1991	2933	3334	1592	1762	1905	2031	3542	4066
16	2217	2512	2760	2979	4415	4992	2565	2823	3040	3232	5411	6179

Standard Features

- ASTM A653 SS GR 50 Min. with G90
- Standard lengths – 6'-0" to 40'-0"
- Tables conform to ANSI/SDI RD-2017
- IAPMO UES ER-423, FM and UL Listed

Optional Features

- Inquire regarding cost and lead times for:
 - 17 gage
 - Short cuts < 6'-0"
 - Alternative metallic and painted finishes
- Acoustical Version

3.5DF-24 DOVETAIL ROOF DECK GRADE 50 STEEL

ASD

Inward Uniform Allowable Loads, ASD (psf)

Deck Gage	Spans	Criteria	Span (ft-in.)										
			11'-0"	12'-0"	13'-0"	14'-0"	15'-0"	16'-0"	17'-0"	18'-0"	19'-0"	20'-0"	21'-0"
18	Single	W_n / Ω	174	146	125	107	94	82	73	65	58	53	48
		L/240	132	102	80	64	52	43	36	30	26	22	19
	Double	W_n / Ω	152	128	110	95	82	73	64	57	51	46	
		L/240	---	---	---	---	---	---	---	---	---	---	---
	Triple	W_n / Ω	190	160	136								
		L/240	---	---	---								
16	Single	W_n / Ω	234	196	167	144	126	110	98	87	78	71	64
		L/240	169	130	102	82	67	55	46	39	33	28	24
	Double	W_n / Ω	210	177	151	130	114	100	89	79	71	64	
		L/240	---	---	---	---	---	---	---	---	---	---	---
	Triple	W_n / Ω	262	220	188								
		L/240	---	---	183								

Notes:

1. Table does not account for web crippling. Required bearing should be determined based on specific span conditions.
2. The symbol "---" indicates that the uniform allowable load based on deflection exceeds the allowable load based on stress.

NOTICE: Design defects that could cause injury or death may result from relying on the information in this document without independent verification by a qualified professional. The information in this document is provided "AS IS". Nucor Corporation and its affiliates expressly disclaim: (i) any and all representations, warranties and conditions and (ii) all liability arising out of or related to this document and the information in it.