

## STAIR TREADS - METRIC

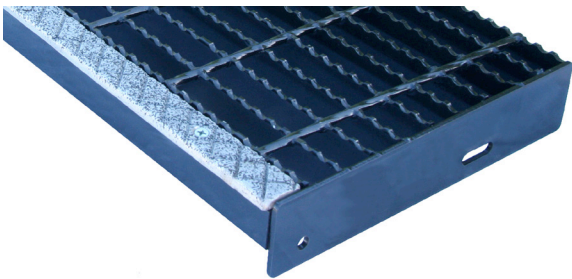
Welded steel stair treads are the most widely used for their strength and ease of installation and are universally used in most industrial and commercial applications. Both can be ordered with a serrated surface for additional safety.

Rectangular bar stair treads provide a high strength and stiffness-to-weight ratio and are available with a serrated surface when additional safety is required.

### Stair Tread Types



Checker Plate Nosing (CP)



Cast Aluminum Abrasive Nosing (CAA)

### Standard Sizes

Bearing Bars: 25mm x 5mm, 32mm x 5mm, 38mm x 5mm

Widths: 248mm, 278mm, 308mm

Lengths: 762mm, 914mm

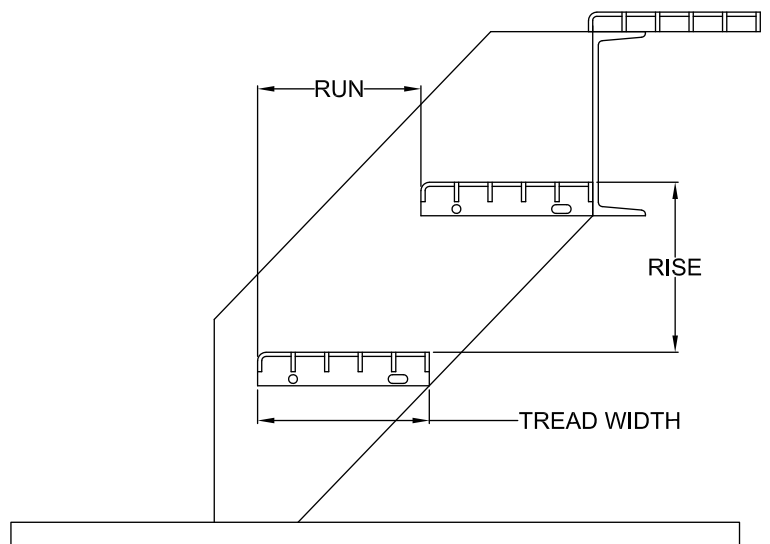
All standard sizes available in painted and galvanized finishes.

Custom sizes can be provided also per the dimensions shown in the tables on p. 91.

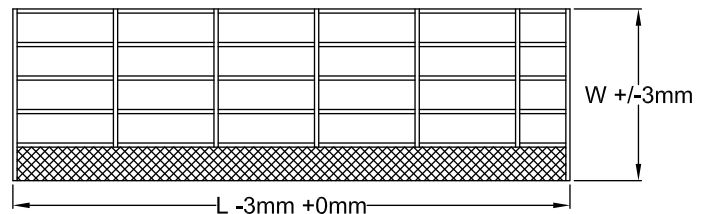
All stair treads are custom fabricated to meet the size, width and length specifications of a particular job. In addition, end plates can be custom fabricated to meet special bolt hole size or location requirements.

Steel nosings are available to add strength at the point of greatest impact and provide a definitive visible edge for extra safety. Choose our checkered plate nosing for normal use.

### Stair Tread Tolerances and Details



Typical Stair Tread Stringer Detail



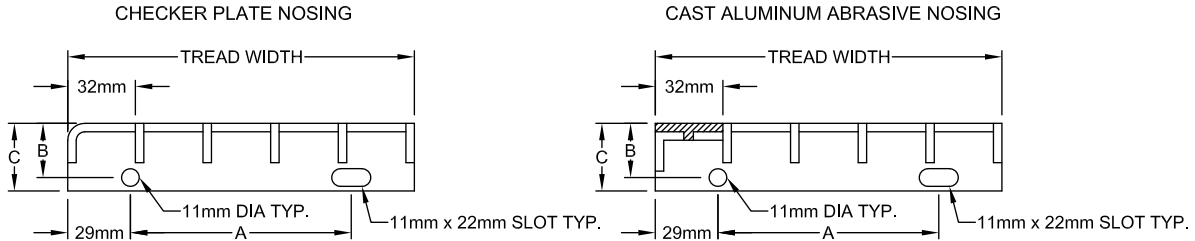
Tread Length and Width Tolerance

# STAIR TREADS - METRIC

## End Plate Dimensions

| Grating Depth | "B" Dimension | "C" Dimension |
|---------------|---------------|---------------|
| up to 32m     | 44mm          | 64mm          |
| 38mm          | 57mm          | 76mm          |

See Tread Width and Bolt Hole Spacing for "A" Dimension



## Tread Width and Bolt Hole Spacing

### 19W4

| No. of Bearing Bars and Nosing | Bearing Bar | **Bolt Hole Spacing "A" |
|--------------------------------|-------------|-------------------------|
|                                | 5mm         |                         |
| <b>Tread Width</b>             |             |                         |
| 5                              | 157mm       | 64mm                    |
| 6                              | 187mm       | 114mm                   |
| 7                              | 217mm       | 114mm                   |
| 8                              | 248mm       | 178mm                   |
| 9                              | 278mm       | 178mm                   |
| 10                             | 308mm       | 178mm                   |

\*\*See Drawing Above

### 11W4

| No. of Bearing Bars and Nosing | Bearing Bar | **Bolt Hole Spacing "A" |
|--------------------------------|-------------|-------------------------|
|                                | 5mm         |                         |
| <b>Tread Width</b>             |             |                         |
| 9                              | 176mm       | 64mm                    |
| 11                             | 211mm       | 115mm                   |
| 13                             | 217mm       | 115mm                   |
| 15                             | 281mm       | 178mm                   |
| 16                             | 298mm       | 178mm                   |
| 18                             | 333mm       | 178mm                   |

\*\*See Drawing Above

## Maximum Tread Length (in)

| Bar Size (mm) | Smooth |      |     | Serrated |      |     |
|---------------|--------|------|-----|----------|------|-----|
|               | 19W4   | 11W4 | 7W4 | 19W4     | 11W4 | 7W4 |
| 25 x 5        | 41     | 51   | 59  | 34       | 45   | 51  |
| 32 x 5        | 56     | 66   | 66  | 50       | 58   | 66  |
| 38 x 5        | 66     | 66   | 76  | 63       | 66   | 68  |

Data Created Based on NAAMM 531-17:

- 1.32kN point load at center, loading only first five bars, up to 1.7m.
- 1.32kN point loads at third-points, loading only first five bars, when > 1.7m.
- L/240 deflection limit on both.